



AluFix

**The lightweight hand-set
formwork**



Ready for multiple applications

High flexibility meets low weight

Combining exceptional durability, versatility and performance with low weight, AluFix makes light work of tough wall-, slab- and foundation-forming tasks on refurbishment, landscaping and other contracts. The crane-independent hand-set formwork offers outstanding customer value.

Fit prop head – secure – install slab formwork

Simply by fitting AluFix evo prop heads to the EuMax props and securing them with the 14/90e pin, the AluFix system is transformed into high-performance slab formwork for up to 46 cm thick slabs.



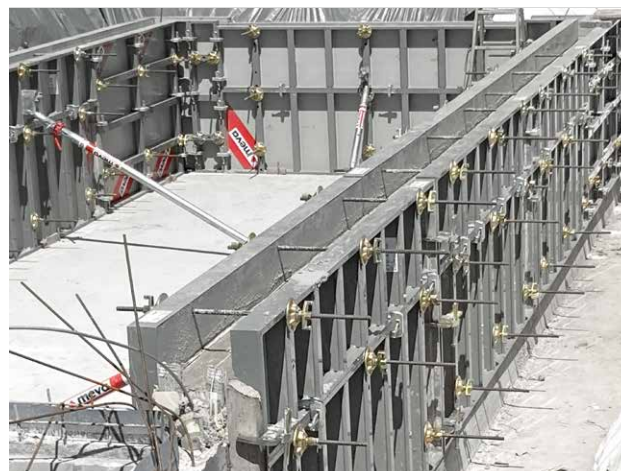
A system for walls and slabs

The range of applications served by this smart system can be extended to include slabs. The use of identical components for both wall and slab formwork simplifies site logistics and inventory management.



Garden architecture and landscaping

Low panel weight, straightforward application with only a few components and rapid assembly make AluFix the ideal formwork solution for garden and landscaping contracts.



Up to 350 cm high with no vertical extension

Intelligent height increments allow efficient shuttering of up to 350 cm high walls with no vertical extension. The finely graduated range of panel sizes caters for numerous layouts – with a minimum number of filler areas and problem-free corner solutions.



Fundamentally smart

Even under spatial constraints, AluFix is easy to align and safe to carry by hand thanks to its ergonomic grip profiles. The system is also ideal for use as stop-end formwork to ground slabs and foundations, even in case of complex geometries.

AluFix – lightweight hand-set formwork

Efficient building construction

A single system for walls and ceilings

AluFix is the product of choice for crane-free assemblies that have to deliver top-class results. The wide range of panel sizes is ideal for accommodating the various requirements and applications encountered across the globe.

The application field for this smart system can also be extended to ceilings – for simplified material storage and construction site logistics.

AluFix is a convincing solution for

- residential schemes
- commercial schemes
- civil engineering projects
- municipal and infrastructure schemes
- garden architecture and landscaping projects

Heights [cm]	Panel width [cm]						Corner panels				Fillers	
	90	75	55	45	40	25	IC	OC	HIC	HOC	SC	FS
350	■	■	■	■	■	■	■	■			■	■
300	■	■	■	■	■	■	■	■			■	■
270	■	■	■	■	■	■	■	■			■	■
250	■	■	■	■	■	■	■	■			■	■
150	■	■	■	■	■	■	■	■	■	■	■	■
135	■	■	■	■	■	■	■	■	■	■	■	■

IC	Inside corner, side length 20 cm	HOC	Hinged outside corner, side length 7.5 cm
OC	Outside corner	SC	Stripping corner, side length 25 cm
HIC	Hinged inside corner, side length 30 cm	FS	Filler strip, 5 cm (alkus)



i

Simply smart

→ Versatility

- A single system for walls and ceilings
- Ideally suited for a diversity of functions
- Great for refurbishment projects

→ Flexibility

- Panel heights 350, 300, 270, 250, 150 and 135 cm and only six panel widths for problem-free corner solutions with any wall thickness

→ Capacity

- Permissible fresh concrete pressure (DIN 18218) over full surface of 50 kN/m² (flatness tolerances to DIN 18202, Tab. 3, Line 6)

→ Crane-independent

→ Closed hollow aluminium profile

- Ergonomic grip profile
- Robust frame construction
- High-grade powder-coated finish
- Impact- and scratch-resistant surface
- Easy to clean

→ Smart multi-function profile

- Features welded-in Dywidag nuts
- All accessories, e.g. brackets, push-pull props and alignment rails, attached with MEVA flange screw

→ Intelligent MEVA product design

- MEVA assembly lock for structurally continuous connections with only a few hammer blows
- High-quality alkus all-plastic facing with long-term, 7-year warranty



Dry ties

The top ties can be simply replaced by tie claws 23, flange nuts and the D22 plastic tube as a spacer.



Internal tie holes

The 90 and 75 cm wide panels are provided with additional internal tie holes, set back from the edge by around 20 cm, that allow tying without obstruction by waterstops and simplify the shuttering of foundations.



Tie-free

25 to 55 cm wide AluFix panels enable foundations and small walls to be quickly and easily cast without conventional tying components. This is achieved through the use of foundation tape connected to the panels by foundation tensioners. The formwork assembly is dry-tied at the top using the tie claw 23.

AluFix – the simply smart formwork solution

A wall full of ideas

MEVA quality in every detail

MEVA systems excel thanks to their supreme standards of quality, efficiency and practical detailing. And the lightweight AluFix hand-set formwork is no exception. With standardised system components, a minimum of accessories and a closely tailored range of panel sizes, it combines all the features that make MEVA systems the unbeatable solution for practical on-site operations. Its compatibility with EcoAs allows the flexible use of formwork inventory.



Flange screw

A single component for strongly connecting all accessories

Multi-function profile

Made from closed hollow aluminium profiles with welded-in DW 15 nuts for rapid, structurally continuous connection of accessories

Closed hollow profile

For high stability and long service life

High-grade powder-coated finish

Facilitates cleaning and reduces concrete adhesion

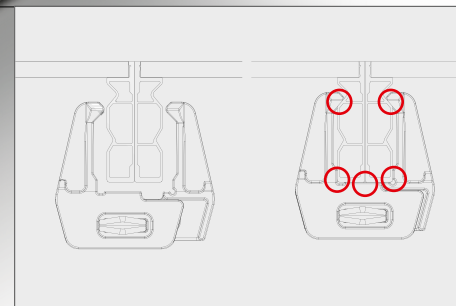
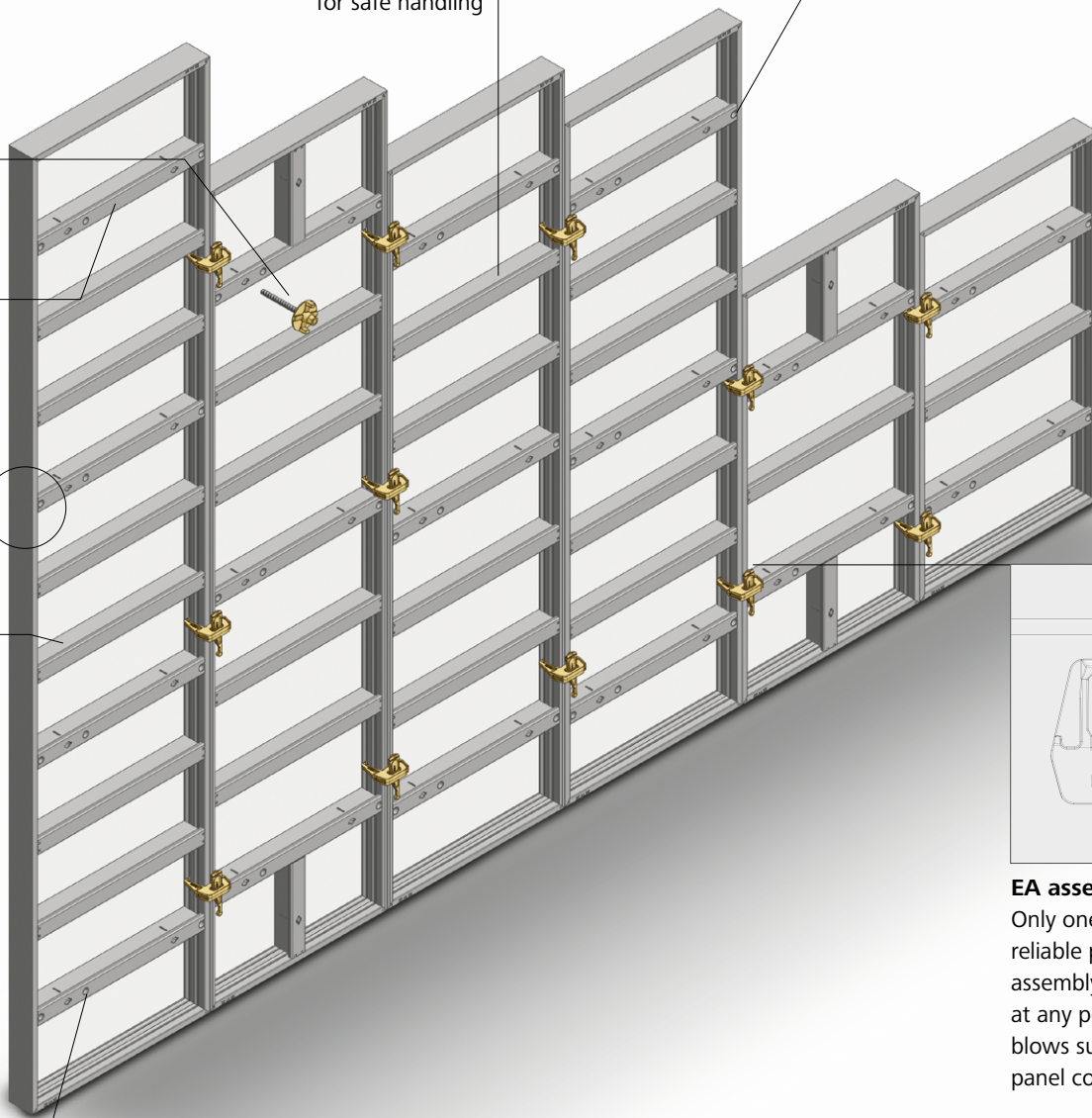


Internal tie holes

Simplify shuttering of foundations

Ergonomic grip profile
 Made from stable, closed hollow aluminium profile for safe handling

Tie hole
 With a conical anchor sleeve welded in from both sides



EA assembly lock
 Only one component is needed for rapid, reliable panel connections: the MEVA assembly lock. Allows single-handed fitting at any position along frame. A few hammer blows suffice to achieve strong, level, stepless panel connections.

Fully compatible with EcoAs
 For flexible use of on-site inventory



alkus all-plastic facing
 No water absorption. Resistant to swelling and shrinkage. The smooth, robust surface guarantees a high-quality concrete finish, even after numerous applications.

Long-lasting and economical

Lighter than plastic and without "best before" date

Recyclable and resource-efficient

MEVA's AluFix lightweight hand-set formwork outperforms all other crane-independent systems in terms of economy, longevity and sustainability. While plastic formwork offers a maximum service life of ten years, AluFix is not limited by any "best before" date. The robust frame construction and facing can effortlessly withstand much longer periods of regular use. Its constituent materials are resistant to corrosion and environmental influences such as UV radiation and temperature fluctuations.

The low weight of the aluminium panels, which are lighter than comparable plastic formwork, guarantees non-strenuous working. Operatives need to fit far fewer connectors and tying components. On-site inventory and work effort are reduced, progress on site speeded up and job safety improved.

AluFix is mainly manufactured from recycled aluminium and, after its long service life, can be handed over for renewed recycling. Moreover, considerable time and resources are saved on cleaning the formwork due to its reduced concrete adhesion and closed hollow frame profiles.



AluFix requires 50% fewer connectors and 25% fewer tying components than plastic formwork. This reduces on-site inventory and streamlines work operations.



Less effort cleaning means lower labour costs and reduced resource consumption.



The low panel weight and ergonomic grip profile ensure safe, non-strenuous working.



AluFix is mainly produced from recycled aluminium and, after its long service life, can be returned for renewed recycling.



The alkus facing guarantees high planning and investment security while meeting the highest fair-faced concrete requirements.

Pioneer and trendsetter

More with MEVA

Formwork. Simple. Smart.

A lot of things that are now considered to be standard in the formwork industry were developed by MEVA in Haiterbach. As a trendsetter for the entire industry, we work day in and day out with great élan to make formwork even safer, more efficient and easier to use for the end user. For us, the excellent quality of our products and technology is a matter of course.

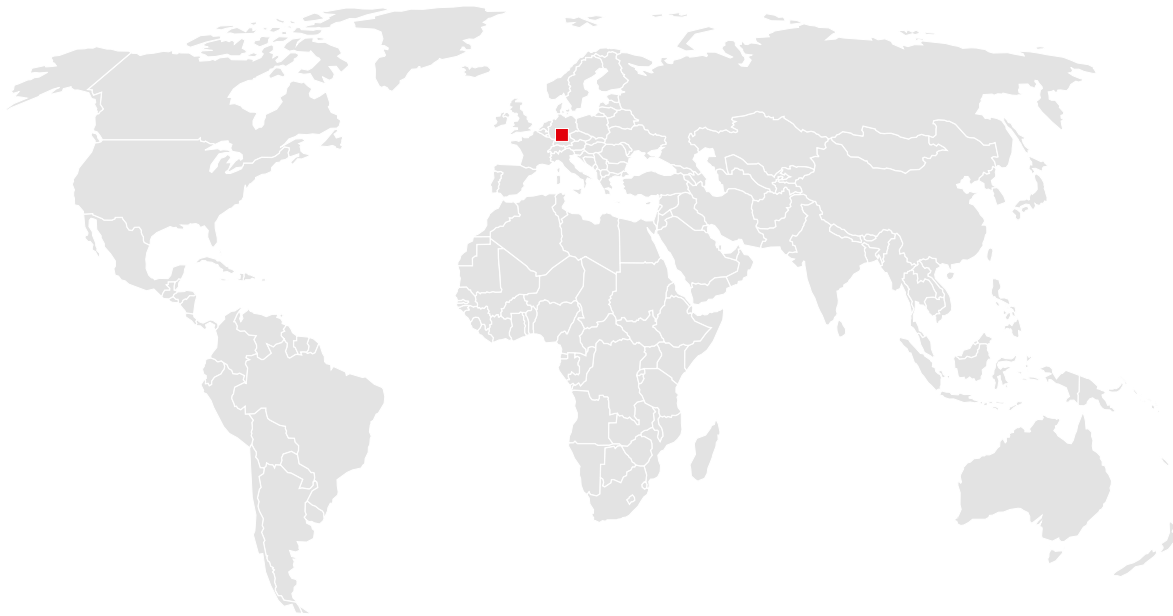
We are independent, family-run and committed to the values of a medium-sized company in everything we do. That is why our customers may rightly expect not only technologically superior products but also comprehensive, personal commitment to projects all around the world.

Complex special formwork or economical standard formwork: Our experience and wide range of products make us a service partner with strong consulting skills, even for the sophisticated challenges construction professionals have to master nowadays.



You can rely on us wherever you are.

With 40 offices on 5 continents, we are
on the spot wherever you need us.



Headquarters (Germany)

MEVA Schalungs-Systeme GmbH
Industriestrasse 5
72221 Haiterbach
Tel. +49 7456 692-01
Fax +49 7456 692-66

info@meva.net
www.meva.net

Subsidiaries/international bases

AE-Dubai	Tel. +971 4 8042200	LU-Rodange	Tel. +352 20 283747
AT-Pfaffstätten	Tel. +43 2252 20900-0	MA-Casablanca	Tel. +212 684-602243
AU-Adelaide	Tel. +61 8 82634377	MY-Perak	Tel. +60 12 5209337
BE-Landen	Tel. +32 11 717040	NL-Gouda	Tel. +31 182 570770
BH-Riffa	Tel. +973 3322 4290	NO-Oslo	Tel. +47 67 154200
CA-Toronto	Tel. +1 416 8565560	NORDIC	Tel. +45 2043 1855
CH-Seon	Tel. +41 62 7697100	PA-Panama City	Tel. +507 2372222
FR-Sarreguemines	Tel. +33 387 959938	PH-Manila	Tel. +63 998 5416975
GB-Tamworth	Tel. +44 1827 60217	QA-Doha	Tel. +974 4006 8485
HU-Budapest	Tel. +36 1 2722222	SG-Singapore	Tel. +65 6992 8000
IN-Mumbai	Tel. +91 22 27563430	US-Springfield	Tel. +1 937 3280022
LATAM	latam@meva.net		



MEVA Schalungs-Systeme GmbH

Industriestrasse 5 Tel. +49 7456 692-01
72221 Haiterbach Fax +49 7456 692-66
Germany info@meva.net

www.meva.net